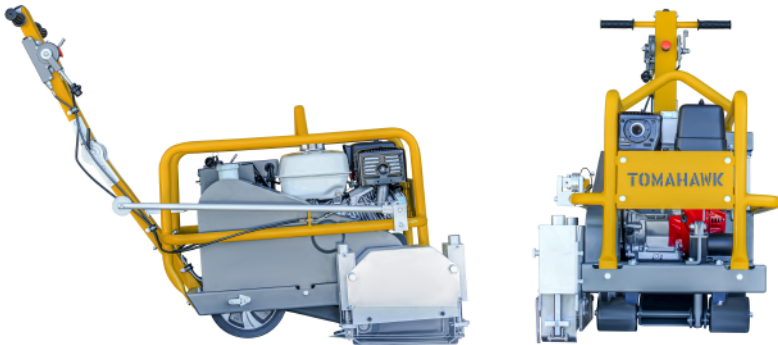


TFS10H-390



Specifications

Engine	Honda GX390
Power	13 HP
Max Cutting Depth	1.5"
Blade Size	9-10"
Blade Flange	Trianglular
Depth Adjustment	Electric
Blade Included	Yes
Dust Port	OSHA Compliant
Wheel Material	Polyurethane
Weight	320 lbs
Dimensions	45" x 27" x 36"
Engine Warranty	3 Year
Product Warranty	1 Year



FEATURES

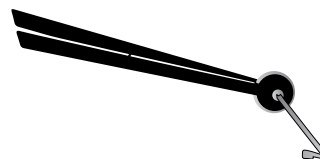
- 13 HP Honda GX390 engine
- Maximum cutting depth of 1.5 inches
- Fits blade sizes up to 9-10 inches
- Electric blade depth adjustment
- Excellent for concrete joints and random crack control
- OSHA compliant vacuum port for dust collection
- Polyurethane wheels for safe operation on fresh concrete
- Comfortable grip handles for easy operation
- 3-year engine warranty and 1-year product warranty
- EPA and CARB compliant



13 HP / 389 cc
Honda GX390 Engine



OSHA Approved Dust Port for
Dust & Silica Collection



Saw Guide Ensures
Straight Cuts



1 Year Product Warranty
3 Year Engine Warranty