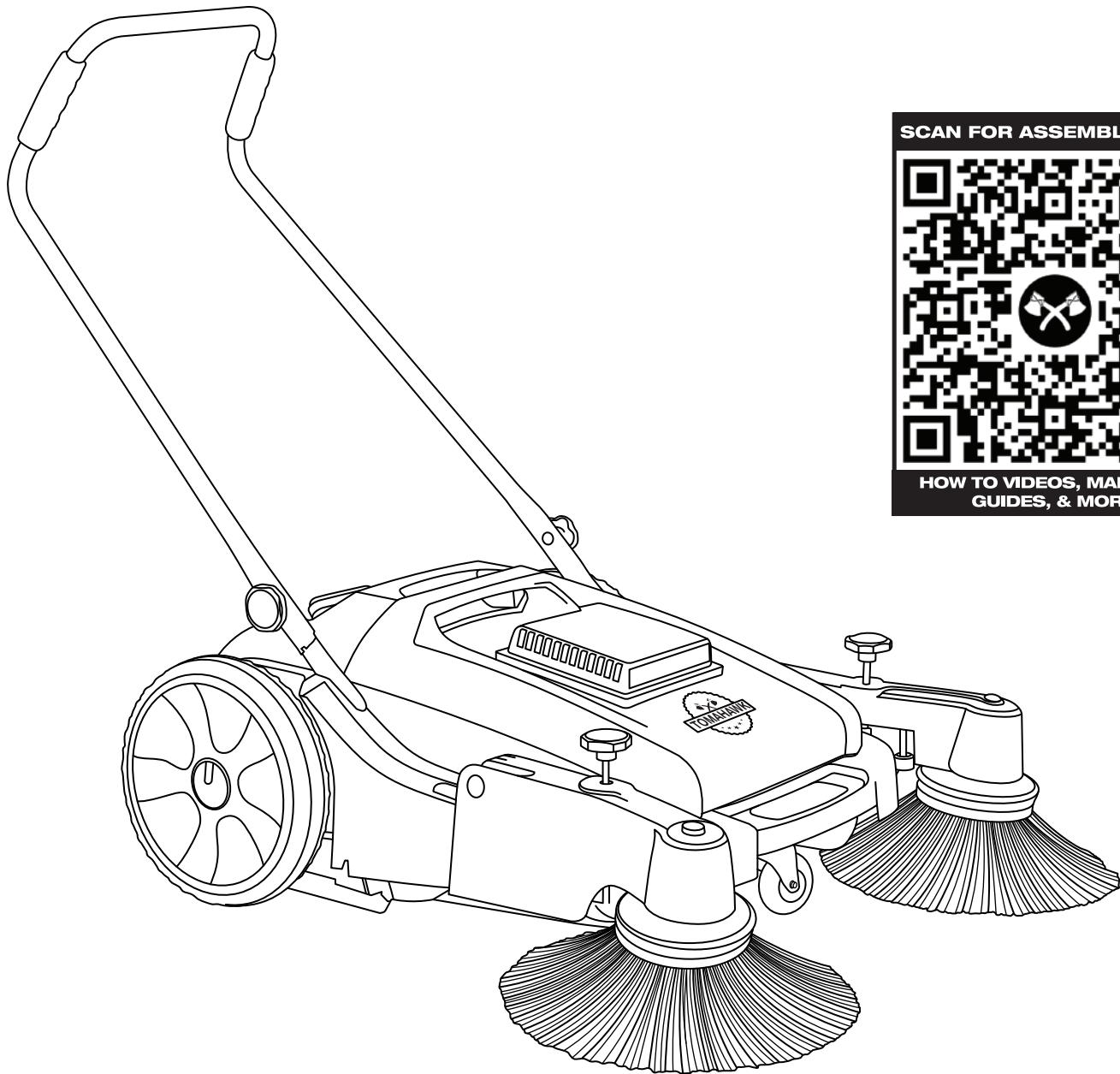


TOMAHAWK

PUSH SWEEPER

MODEL NUMBER: TOS38

Operation Manual



SCAN FOR ASSEMBLY GUIDE



HOW TO VIDEOS, MANUALS,
GUIDES, & MORE



To reduce the risk of injury, the user must read and understand the Operator's Manual before using this product. Save these instructions for future reference.

Table of Contents

- 1. SAFETY INFORMATION**
- 2. EQUIPMENT DATA**
- 3. SPECIFICATIONS**
- 4. QUICK ASSEMBLY GUIDE**
- 5. OPERATION**
 - Using the Sweeper**
 - Checking the Equipment**
 - Removing Debris**
- 6. TROUBLESHOOTING**
- 7. MAINTENANCE RECORD**
- 8. REPLACEMENT PARTS**
- 9. WARRANTY**
- 10. PARTS MANUAL**
- 11. CATALOG & COUPON**

Register Your Equipment

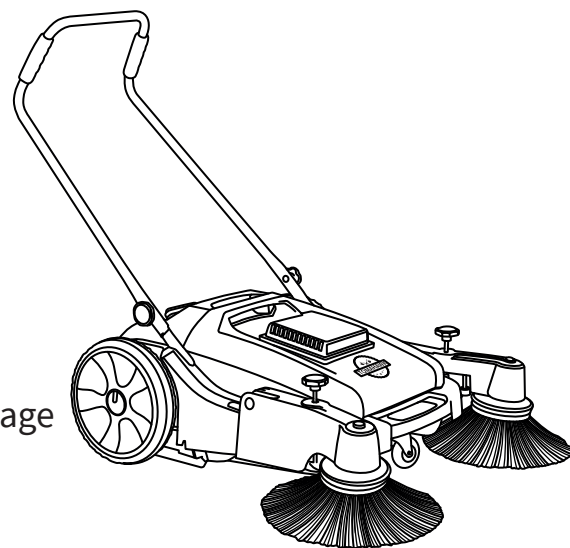
Thank you for purchasing TOMAHAWK® equipment! Your product is covered by the TOMAHAWK® Warranty policy, but in order to activate your warranty, we need you to register your product. In addition to activating your equipment warranty, product registration will grant you access to important product updates, streamlined customer service and more.

INCLUDED WITH YOUR REGISTRATION

- ✓ Equipment Warranty Activation
- ✓ Product Updates
- ✓ Streamlined Customer Service
- ✓ Exclusive Discounts and Sales

STEPS TO REGISTER YOUR EQUIPMENT

1. Visit www.tomahawk-power.com
2. Choose “Product Registration” at the bottom of the page
3. Enter your equipment’s serial number to get started
4. Provide all required information
5. Submit Registration



Equipment Resources

TOMAHAWK® Customer Service doesn’t stop at checkout. We understand to keep a job-site running smoothly - the proper equipment, spare parts, instruction manuals, and more are needed at the drop of a hat. Visit www.tomahawk-power.com to gain access to the incredible resources below.

How To Video Library

More of a visual person? Visit our Video Library for equipment assembly instructions, troubleshooting tips, and more!

Found at the TOMAHAWK® Resource Center

Manual and Assembly Guide Library

Visit our Manual Library if you are looking for a lost operations manual or a particular spare part?

Found on the TOMAHAWK® Manuals Page

Service Requests

In need of a quick fix or a service center referral? Submit a Service Request and a TOMAHAWK® Technician will respond shortly to get you the help you need.

Choose “Service Request” at the bottom of www.tomahawk-power.com



This manual provides information and procedures to safely operate and maintain this model. For your own safety and protection from injury, carefully read, understand and observe the safety instructions described in this manual.

Keep this manual or a copy of it with the machine. If you lose this manual or need an additional copy, please contact TOMAHAWK® or visit www.tomahawk-power.com This machine is built with user safety in mind; however, it can present hazards if improperly operated and serviced. Follow operating instructions carefully. If you have questions about operating or servicing this equipment, please contact TOMAHAWK®.

The information contained in this manual is based on machines in production at the time of publication. TOMAHAWK® reserves the right to change any portion of this information without notice.

No part of this publication may be reproduced in any form or by any means, electronic or mechanical, including photocopying, without express written permission from TOMAHAWK®.

Any type of reproduction or distribution not authorized by TOMAHAWK® represents an infringement of valid copyrights and will be prosecuted. We expressly reserve the right to make technical modifications, even without due notice, which aim at improving our machines or their safety standards.

1. SAFETY INFORMATION

This manual contains DANGER, WARNING, CAUTION, and NOTE callouts which must be followed to reduce the possibility of personal injury, damage to the equipment, or improper service.



This is the safety alert symbol. It is used to alert you to potential personal injury hazards. Obey all safety messages that follow this symbol to avoid possible injury or death.



DANGER indicates an imminently hazardous situation which, if not avoided, will result in death or serious injury.



WARNING indicates a potentially hazardous situation which, if not avoided, could result in death or serious injury.



CAUTION indicates a potentially hazardous situation which, if not avoided, may result in minor or moderate injury.

1.1 Operating Safety

1.1.1 Observe all applicable local safety regulations, standards, and ordinances.

1.1.2 Individuals who operate the sweeper must be informed about the dangers related to use of the machine.

1.1.3 Do not operate the sweeper if you are under the influence of any substance (drugs, alcohol) which might impair vision, dexterity, or judgment.

1.1.4 Keep bystanders, especially children, and animals away from the work area.

1.1.5 The user is responsible for avoiding injury to third parties or damage to their property.

1.1.6 Do not lend or rent your power tool without the instruction manual. Be sure that anyone using it understands the information contained in this manual.

1.1.7 If you have any condition that might be aggravated by strenuous work, check with your doctor before operating a power tool.

1.2 Usage

1.2.1 The sweeper is designed for sweeping road dust, leaves, grass, paper, and similar items from flat and hard surfaces.

1.2.2 Do not sweep substances that are dangerous to health. The power tool is not suitable for sweeping liquids.

1.2.3 Never sweep explosive dusts, liquids, acids, or solvents.

1.2.4 Do not operate the power tool in potentially explosive atmospheres.

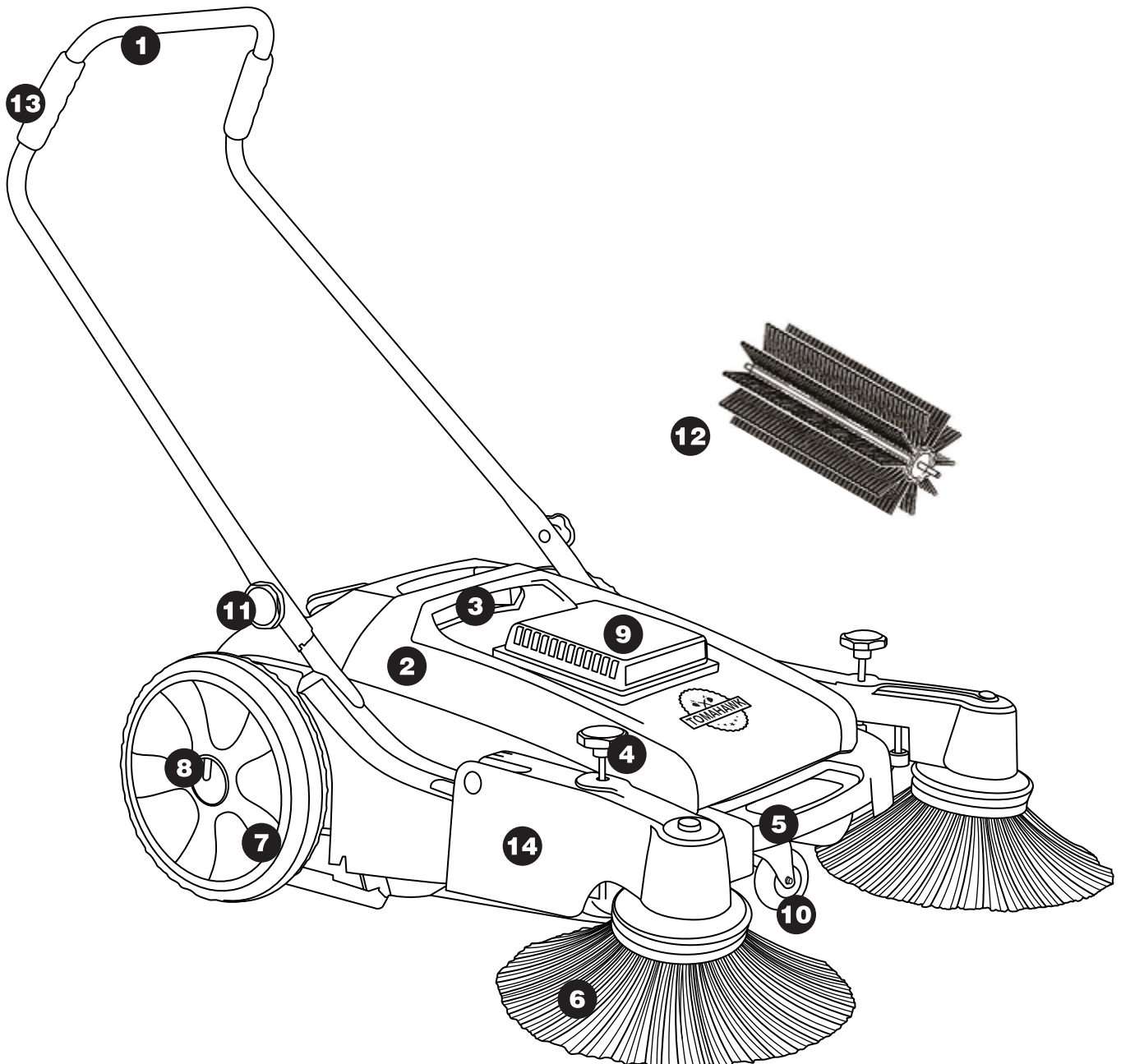
1.2.5 Do not use the power tool as a means of transport.

1.2.6 Wear sturdy shoes with non-slip soles

2. EQUIPMENT DATA

2.1 Features

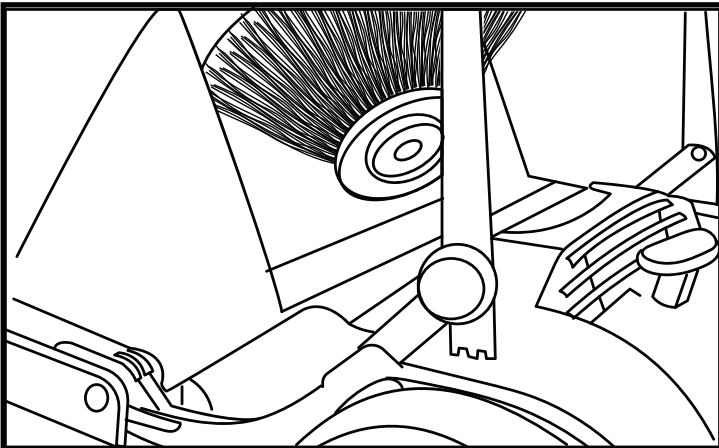
1. Push Handle
2. Waste Bin
3. Waste Bin Handle
4. Arm Adjustment Knob
5. Carrying Handle
6. Disc Brush
7. Running Wheel
8. Wheel Cover
9. Dust Filter
10. Angled Wheel
11. Handle Knob
12. Rolling Brush
13. Handle Grip
14. Baffle



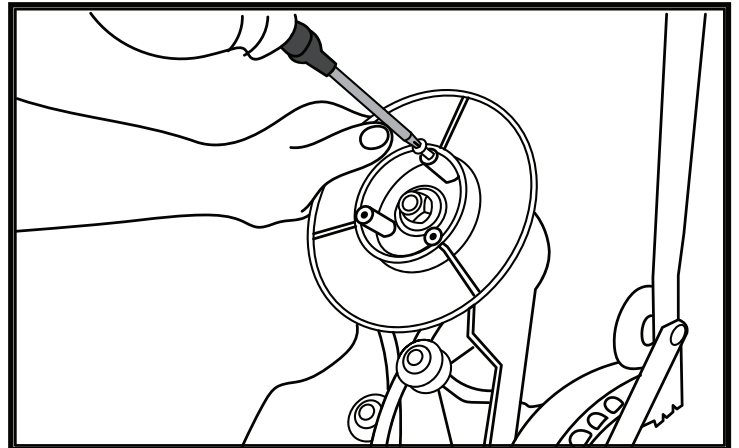
3. SPECIFICATIONS

TOS38 SPECIFICATIONS	
Working Width	31 - 38 in. (78.7 - 96.5)
Cleaning Area	12,467 ft (3799.9 m)
Container Capacity	14.5 Gallons (54.8 Liters)
Net Weight	60 lb. (27.2 kg)
Package Size	36 x 31 x 16 in (91.4 x 78.7 x40.6 cm)
Storage Temperature	14F - 104F (-10C - 40C)
Brush Assembly Types	2 Side Brushes 1 Roller Brush
Roller Brush	19 in. (48.2 cm)
Side Brush	15 in. (38.1 cm)
Uses	Indoor and Outdoor
Fine Dust Filter	Included
Adjustable Roller Brush	Yes
Foldable Side Brush	Yes

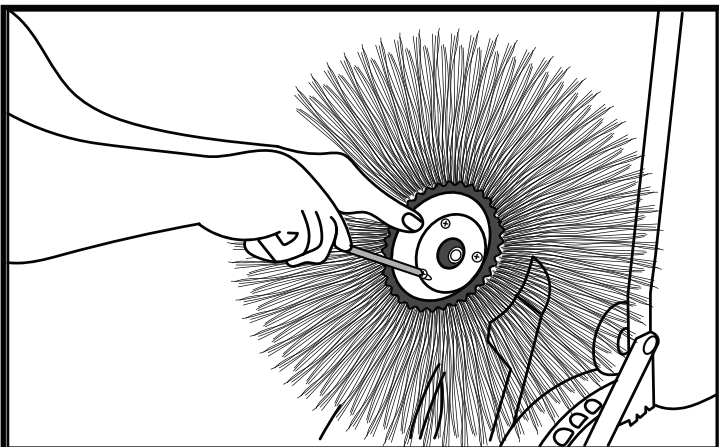
4. QUICK ASSEMBLY GUIDE



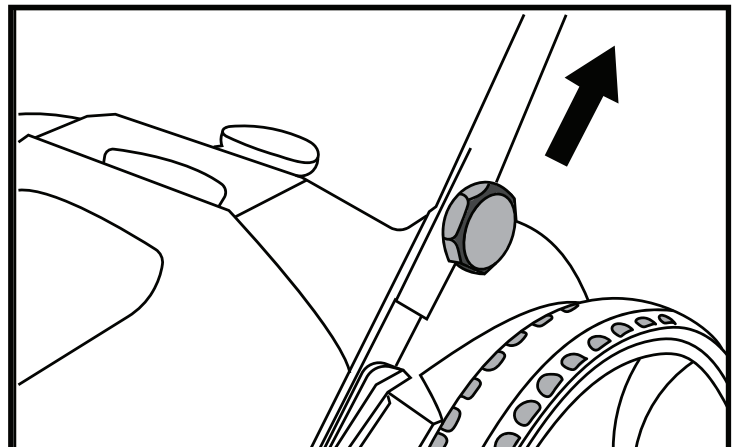
1 Raise the handles and open the hopper bin to find the sweeper's two front brooms.



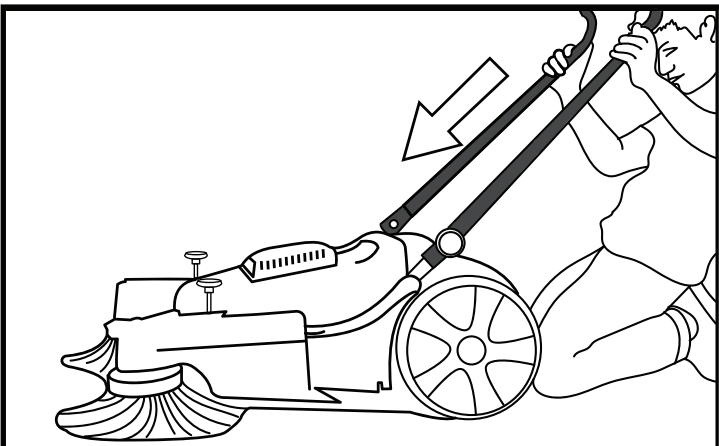
2 Lift the broom arms and begin unscrewing the 3 screws attached underneath.



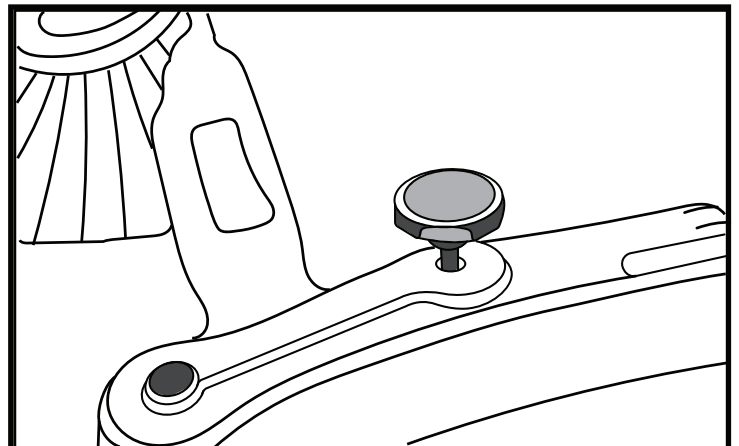
3 Align the first broom to the holes in the arm and begin to fasten in place with the screws.



4 Loosen the handles knobs then pull the handlebar up to align it with the slots.



5 Push the handlebar down into the slots and tighten the knobs to lock it in place.



6 Adjust the height of the brushes using the back lever and side knobs for deeper cleaning.

5. OPERATION

5.1. Using the Sweeper

5.1.1 The operator should use the sweeper under normal conditions and consider the surrounding environment when operating - be cautious of people around the sweeper and objects that may unintentionally sweep in an outward direction.

5.1.2 Depending upon the area the operator intends to sweep, you can adjust the height of the front and back brushes. The higher the brush is set the less pressure exerted on surfaces. A higher the brush is set may be less effective but will increase the longevity of the brush. A lower brush setting will be more effective at sweeping, but may be harder to push and decrease the longevity of the brush.

5.1.3 If debris is not going into the sweeper, try sweeping quickly with some force over the debris pile to push the trash into the sweeper trash bin.

Note: Do not pull the sweeper in reverse. It will not properly collect trash in the reverse direction.

5.2 Checking the Equipment Prior to Use

5.2.1 Check to ensure that the push handle is securely attached to the sweeper.

5.2.2 Check condition of waste bin and ensure that it is securely attached.

5.2.3 Check the disc brushes and fine dirt sweeping roller for stuck parts and embedded dirt - bristles must move freely.

5.2.4 Check height adjustment of the disc brushes and adjust to the ground to be swept.

5.2.5 Check the height adjustment.

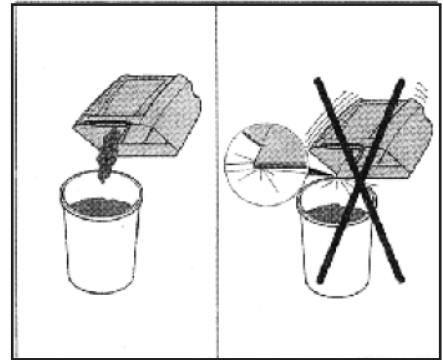
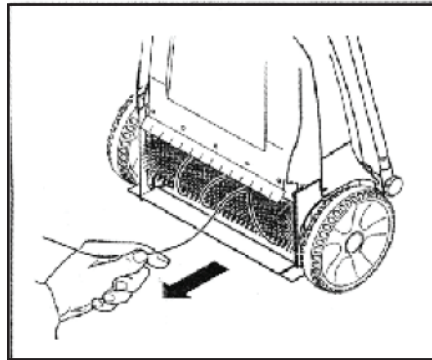
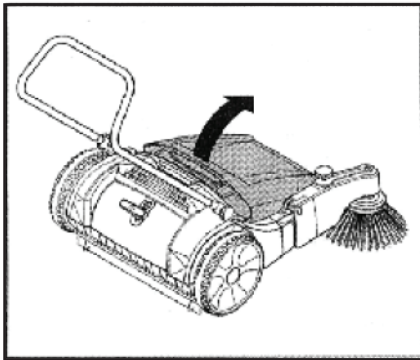
Note: The machine must be serviced regularly. Do not attempt any maintenance or repair work not described in the Instruction Manual. All other work should be carried out by a servicing dealer.

5.3 Removing Debris

5.3.1 Hold your handle and lift it up to remove the garbage can

5.3.2 When the main brush is entangled with garbage, it should be reversed and removed in time.

5.3.3 Dump the garbage along the side of the garbage can. No knocking on the garbage can is allowed.



6. TROUBLESHOOTING

6.1 Cleaning the Equipment

6.1.1 Always clean, dust off and clear debris from the sweeper

6.1.2 Do not use any grease solvents, pressure washer for cleaning the sweeper.

6.1.3 Wear safety gear when cleaning to reduce the risk of injury.

6.1.4 Store the machine in a safe and dry area.

6.2 Fixing a Clog

Solution: If one of the side brooms or the roller brush becomes blocked, stop work, and remove the blockage. Wear work gloves to reduce the risk of cuts or injuries from sharp objects.

6.3 If Debris Escapes from the Sides

Solution: Continue pushing the sweeper for a brief period, lift the sweeper up at the front (front wheels up doing a wheelie) so that dirt falls to the back of the trash bin hopper. This helps make better use of the hopper's full capacity. When sweeping heavy material, ex: gravel, loose chippings, nails the sweeper's center of gravity shifts to the rear. This tends to lift the side brooms away from the surface and reduce cleaning efficiency. Adjust the side brooms downward accordingly.

6.5 Side Brush Not Moving

Solution: Replace Brush and or band that rotates brush.

6.6 Debris Not Sweeping up into Hopper

Solution: Replace roller brush

6.7 Brush Bristles Damaged

Solution: Use a heat gun or blower dry to straighten bristles

6.8 The Machine is Difficult to Push

Solution: The Roller brush may have a blockage. Unclog the brush. Also, the side brushes may be a setting that is too low; increase the height of the brushes.

6.9 Gear Components Stiff

Solution: Lubricate gears with a silicone-based oil.

7. MAINTENANCE RECORD

TOMAHAWK® tools are assembled with care and will provide years of service when properly maintained. Preventative maintenance and routine service are essential to the long life of your tool. Adhere to reading through this manual thoroughly. You will find that you can do some of the regular maintenance yourself. However, when in need of parts or major service, be sure to contact a TOMAHAWK® Technician. For your convenience we have provided this space to record relevant data about your TOMAHAWK® equipment.

Invoice Number:		Type of Machine:	
Date Purchased:		Dealer Name:	
Serial Number:		Dealer Phone:	

REPLACEMENT PARTS USED					MAINTENANCE LOG	
PART NO.	DESCRIPTION	QTY	COST	DATE	DATE	OPERATION

8. REPLACEMENT PARTS

8.1 For replacement parts and technical questions visit www.tomahawk-power.com or scan the QR code on the front of this manual.

8.2 Not all equipment components are available for replacement. The illustrations within this manual are a convenient reference to the location and position of parts in the assembly sequence.

8.3 When ordering parts, the following will be required: equipment model number, serial number/lot, date code, and description.

8.4 The distributor reserves the right to make design changes and/or improvements to equipment, parts, accessories, and manuals without notice.

9. WARRANTY

Your new TOMAHAWK® equipment is warranted to the original purchaser for a period of one-year.

(12 months) from the original date of purchase. The TOMAHAWK® warranty is against defects in design, materials and workmanship.

The following are not covered under the warranty:

1. Damage caused by abuse, misuse, dropping or other similar damage caused by or as a result of failure to follow assembly, operation or user maintenance instructions.
2. Alterations, additions or repairs carried out by persons other than TOMAHAWK® or their recognised agents.
3. Transportation or shipment costs to and from TOMAHAWK® or their recognised agents, for repair or assessment against a warranty claim, on any machine.
4. Materials and/or labor costs to renew, repair or replace components due to fair wear and tear.

TOMAHAWK® and/or their recognised agents, directors, employees or insurers will not be held liable for consequential or other damages, losses or expenses in connection with or by reason of or the inability to use the machine for any purpose.

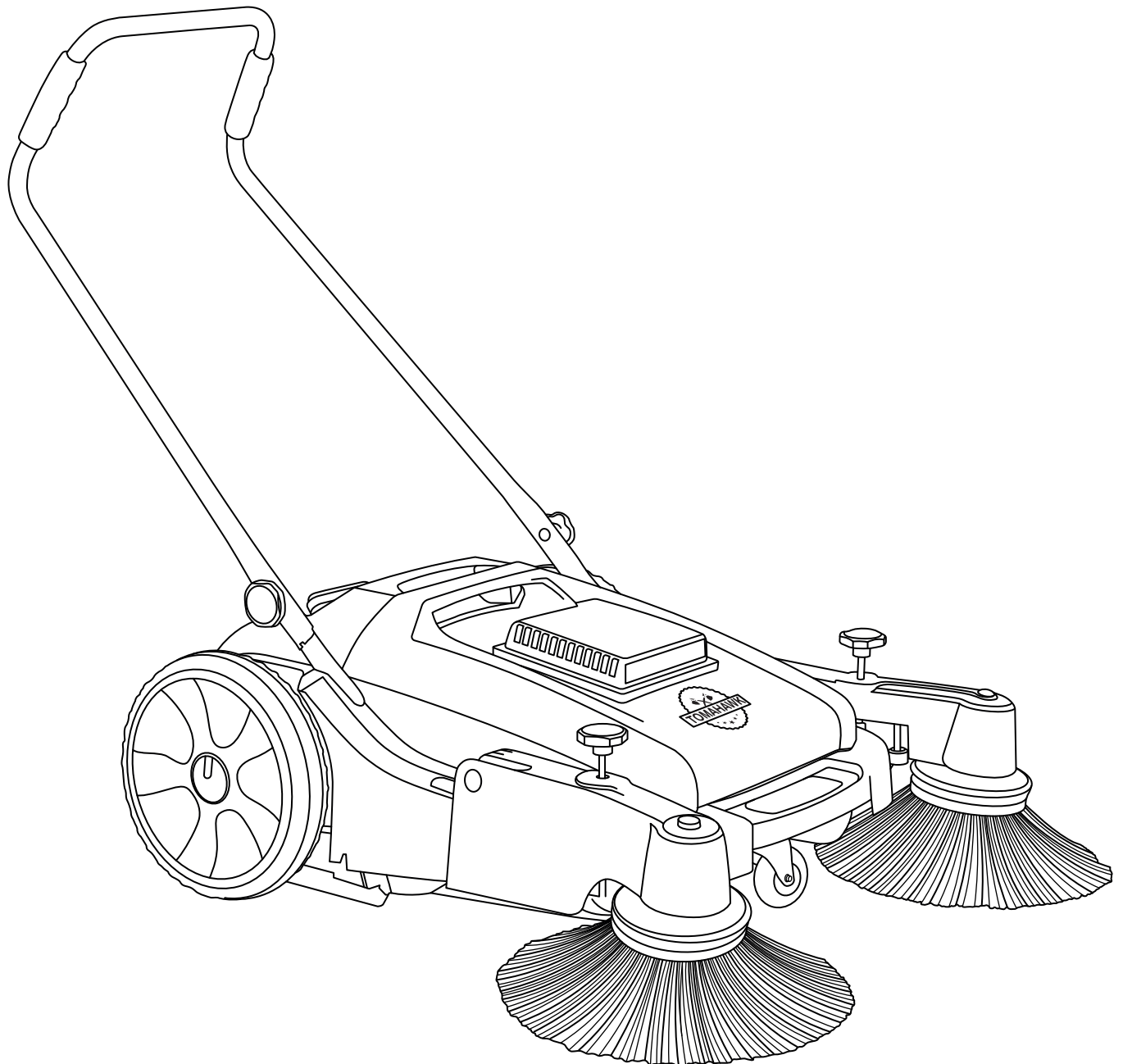
Warranty Claims

Before submitting any warranty claim, your new TOMAHAWK® equipment should be registered through www.tomahawk-power.com. Follow the steps on page 3 to complete the equipment registration. After registration is complete, all warranty claims should firstly be directed to TOMAHAWK® through the online Service Request form found at www.tomahawk-power.com/pages/service-request.

TOMAHAWK

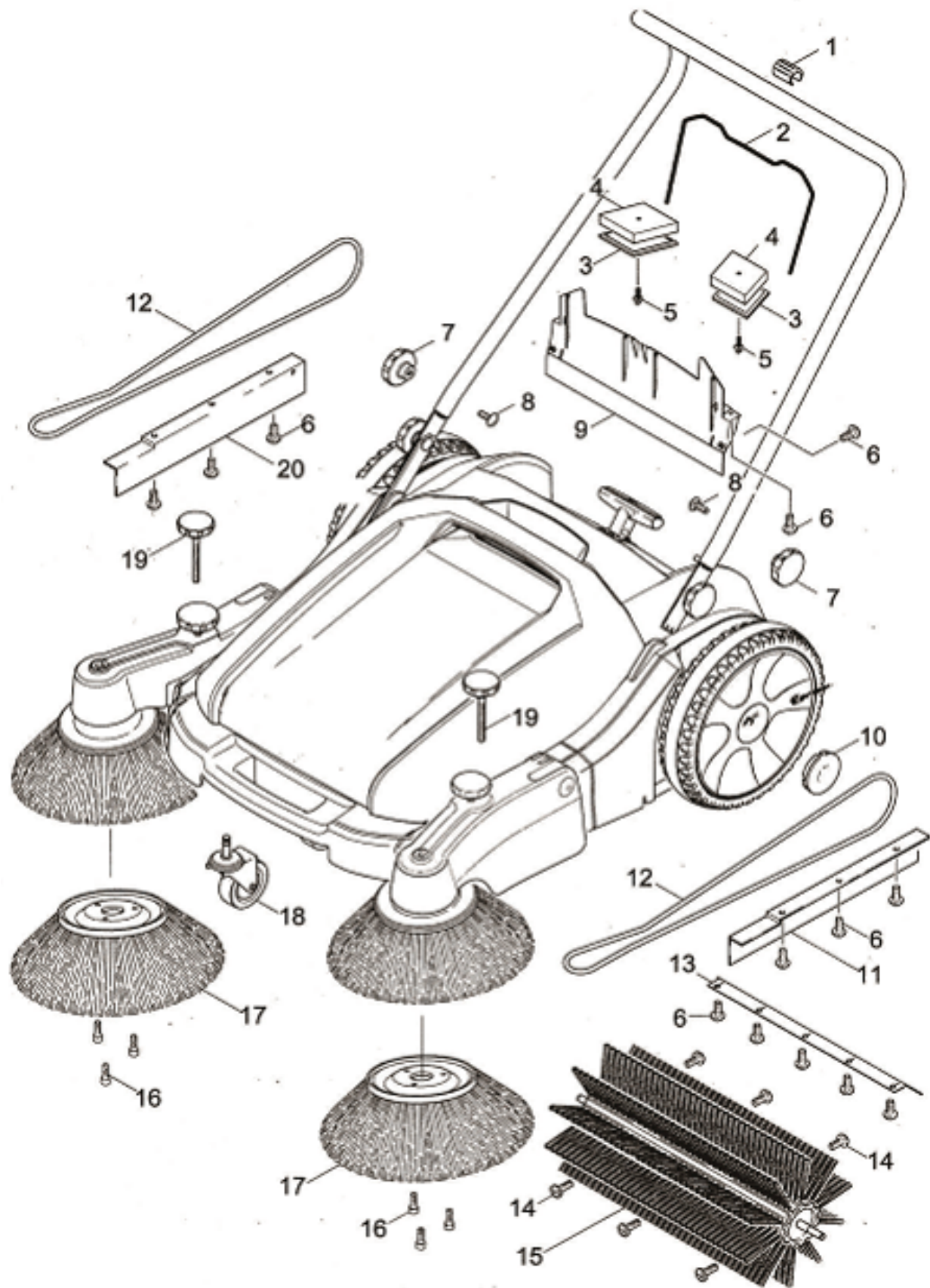
**TOS38
PUSH SWEEPER**

Parts Manual



PARTS LIST

Part #	Name
1	Handle Sleeve
2	Sealing Gluey Stripe
3	Sponge Cap
4	Sponge
5	Locking Pin
6	Self Tapping Screw St4.8*16
7	Screw Cap
8	Half Round Head Square Neck Bolt M8*25
9	Dust-Proof Rear Cover
10	Wheel Cover
11	Baffle 1
12	Drive Belt
13	Dust-Proof Rubber
14	Self Tapping Screw ST4.8*32
15	Rolling Brush
16	Self Tapping Screw ST4.8*22
17	Side Brush
18	Universal Wheel
19	Adjusting Bolt Assembly
20	Baffle 2





TAKE BACK YOUR YARD

Enjoy the outdoors again.

Tomahawk mosquito foggers deliver the power to eliminate virus-carrying pests, before they ruin outdoor activities for your friends and family. **10x Faster** than manual sprayers, cover 1 acre in less than 30 minutes with **40ft of Reach**. Great for year-round use, Tomahawk Foggers are also an excellent leaf blowing solution. No matter the season, keep your yard pest free and looking great!



Item #: TMD14

3.7 GALLON TURBO BACKPACK FOGGER

www.tomahawk-power.com



TOMAHAWK

PRODUCT CATALOG

COMPACTION



HONDA
ENGINES

3,550 lbs/ft Vibratory Rammer
Part#: TR68H

3.6 HP Honda GXR120 Engine
Easily achieve a 100% compaction rating
3-in-One Fuel System with carburetor protection
13" x 11" plate for narrow trenches and corners
3 Year Engine Warranty & 1 Year Product Warranty



HONDA
ENGINES

3,400 lbs/ft Plate Compactor
Part#: TPC90H

5.5 HP Honda GX160 Engine
Easily achieve a 100% compaction rating
22" x 20" cold, rolled steel beveled base plate
Includes 3.5 gallon water tank for asphalt compaction
3 Year Engine Warranty & 1 Year Product Warranty



HONDA
ENGINES

KOHLER
ENGINES

3,000 lbs/ft Plate Compactor
Part#: TPC80 & TPC80H

6 HP Kohler CH260 & 5.5 HP Honda GX160 Engines
Easily achieve a 100% compaction rating
16.5" x 21.5" plate for narrow trenches and corners
Optional Honda Engine model: TPC80H
3 Year Engine Warranty & 1 Year Product Warranty

FINISHING



6.5 Gal Backpack Concrete Sprayer
Part#: TCS6.5

Maintain constant, adjustable pressure up to 450 PSI
Achieve superior concrete finishes with even spraying
Spray 15,000 sq ft in less than 10 minutes
Compatible with major manufacturer wands
1 Year Product Warranty



HONDA
ENGINES

1.6 HP Vibratory Concrete Screed
Part#: TVSA-H

1.6 HP Honda GX35 Engine
Aluminum Magnesium blades available from 8ft - 14ft
Finish concrete 4X faster than other screed methods
360° adjustable handle placement
3 Year Engine Warranty & 1 Year Product Warranty



HONDA
ENGINES

6" Early Entry Green Concrete Saw
Part#: TFS6H

5.5 HP Honda GX160 Engine
Maximum cutting depth of 1 3/16 inches
OSHA compliant vacuum port for dust collection
Includes 6" early entry concrete blade
3 Year Engine Warranty & 1 Year Product Warranty

FINISHING



HONDA
ENGINES

1.6HP Backpack Concrete Vibrator
Part#: TVIBH + TVW10-P

1.6 HP Honda GX35 engine
Consolidation with speeds of 10,000-12,000 VPM
Quick Connect centrifugal clutch vibrator
1" and 2" Diameter Whips Available in 10ft Length
3 Year Engine Warranty & 1 Year Product Warranty



HONDA
ENGINES

KOHLER
ENGINES

36" & 46" Concrete Power Trowel
Part#: TPT36H/K & TPT46H/K

6 HP/14HP Kohler & 5.5HP/8.5HP Honda Engines
Adjust trowel blade pitch from 0-28°
60-115 RPM rotor speed for superior concrete finishes
Includes float pan and trowel blades
3 Year Engine Warranty & 1 Year Product Warranty



HONDA
ENGINES

8" Gas Powered Concrete Scarifier
Part#: TSCAR8H

5.5 HP Honda GX160 Engine
Remove traffic lines at 800 - 1,000 linear ft/hr
Tungsten Carbide Blade Kit Available
OSHA approved dust port for silica vacuum removal
3 Year Engine Warranty & 1 Year Product Warranty

HAVE QUESTIONS?

Contact us. *We're here to help!*

Email us at sales@tomahawk-power.com

10% OFF

USE CODE

SAVE10

AT CHECKOUT FOR

10% OFF YOUR ORDER AT

WWW.TOMAHAWK-POWER.COM

POWER / WELDING

INVERTER SERIES



2000 Watt Inverter Generator
Part#: TG2000i

2000 Max Watts, 1600 Rated Watts
Run Time of 8 hours on 1 gallon of gas
OSHA and GFCI Compliant
Parallel technology capable for double the power
2 Year Product Warranty

INVERTER SERIES



210 Amp Portable Welder Generator
Part#: TWG135Ai

Steady 50 - 135 Amp DC welding output
3300 Watt Inverter Generator
60% Duty Cycle for extended use
Suitable for welding rods from 6010 to 7024
2 Year Product Warranty



210 Amp Portable Welder Generator
Part#: TWG210A

Steady 50 - 210 Amp DC welding output
2000 Watt Inverter Generator
60% Duty Cycle for extended use
Suitable for welding rods from 6010 to 7024
2 Year Product Warranty

PEST CONTROL



3.7 Gallon 3HP Backpack Fogger
Part#: TMD14

Turbo Boosted Pump with 40ft + Horizontal Reach
Sprays 1 acre in 30 minutes
10X Faster than Manual Pump Sprayers
Converts to Leaf Blower with 200 MPH Air Velocity
1 Year Product Warranty



4.75 Gallon Battery Power Sprayer
Part#: eTPS18

Reach Up to 30ft Horizontal Reach
Sprays 6000 sq ft in 10 minutes
10X Faster than Manual Pump Sprayers
70 PSI Commercial Grade Pump
1 Year Product Warranty



5 Gallon Backpack Power Sprayer
Part#: TPS25

Reach Up to 30ft Horizontal Reach
Sprays acres in 10 minutes
10X Faster than Manual Pump Sprayers
50-435 Adjustable PSI Commercial Grade Pump
1 Year Product Warranty

AND MORE



4 Gal. Motorized Fertilizer Spreader
Part#: TGS30

Reach up to 30ft Horizontally
Sprays 1 acre in 30 minutes
20X Faster than push spreaders
Converts to Leaf Blower with 200 MPH Air Velocity
1 Year Product Warranty



3" Full Trash Water Pump
Part#: TW3H

Moves liquids at a rate up to 375 gal/min
Handle solids up to 1.5"
Silicone carbide seals and a chrome plated volute
8 HP engine protected by rugged all purpose frame
3 Year Engine Warranty & 1 Year Product Warranty



Commercial 38" Push Sweeper
Part#: TOS38

Collect up to 14.5 gallons of dust and debris
Can be used indoors & outdoors on wet or dry surfaces
Includes integrated airflow control and fine dust filter
Lightweight design, capable of fitting through doorways
1 Year Product Warranty

ASSEMBLED IN THE
USA
PARTS SOURCED GLOBALLY

* All coupons in this manual are valid only for orders placed on www.tomahawk-power.com, unless otherwise noted. Coupon codes may only be used once per customer and may not be combined with any other offer. Coupons may expire at any time without notice.

(866) 577-4476

www.tomahawk-power.com



Power Your World

Tomahawk understands to keep a job-site running smoothly the proper equipment and spare parts are needed at the drop of a hat. With same day shipping and faster delivery times, count on Tomahawk to keep you powered throughout the day! With long lasting parts and engines, Tomahawk equipment will be the star of your fleet for years to come. Visit www.tomahawk-power.com to get started today!

TOMAHAWK

TOMAHAWK®, LLC
San Diego, CA

Sales Support
(866) 577-4476
sales@tomahawk-power.com

Equipment Support
(866) 577-4476
support@tomahawk-power.com

www.tomahawk-power.com



FACEBOOK
facebook.com/TomahawkPowerUSA

YOUTUBE
youtube.com/TomahawkPower

INSTAGRAM
[@tomahawkpower](https://instagram.com/tomahawkpower)