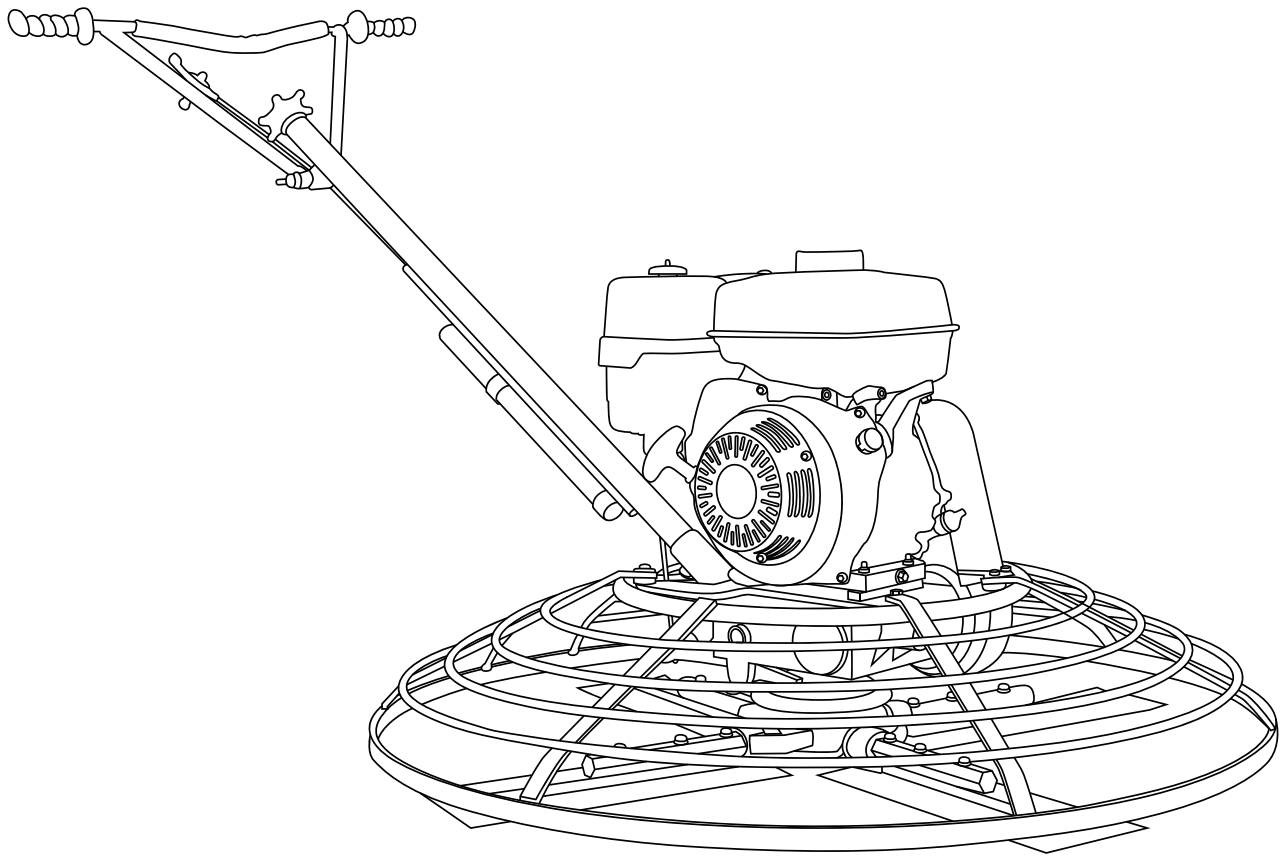


TOMAHAWK

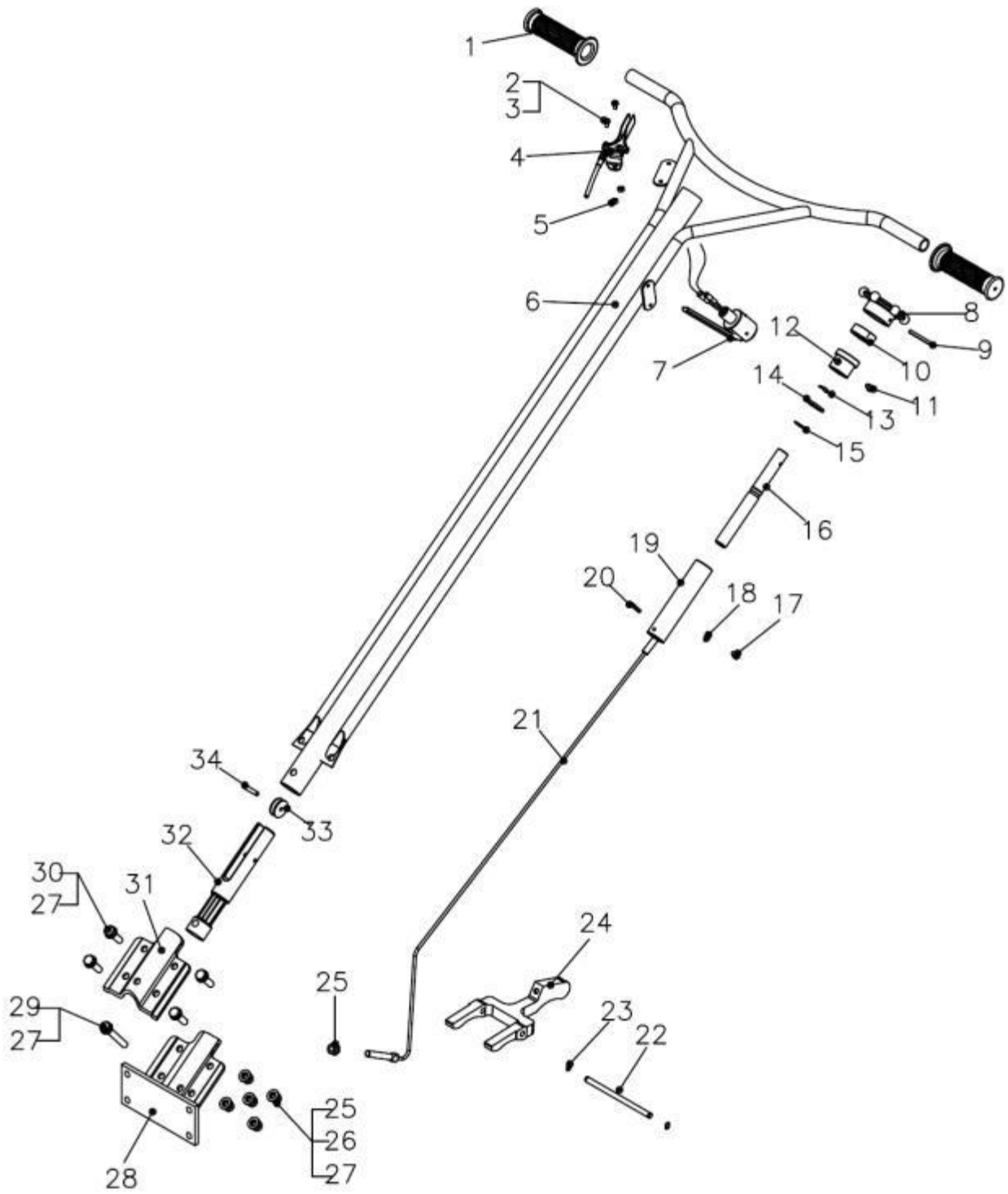
TPT36H, TPT46H-270, TPT46H-390
POWER TROWEL

Parts Manual



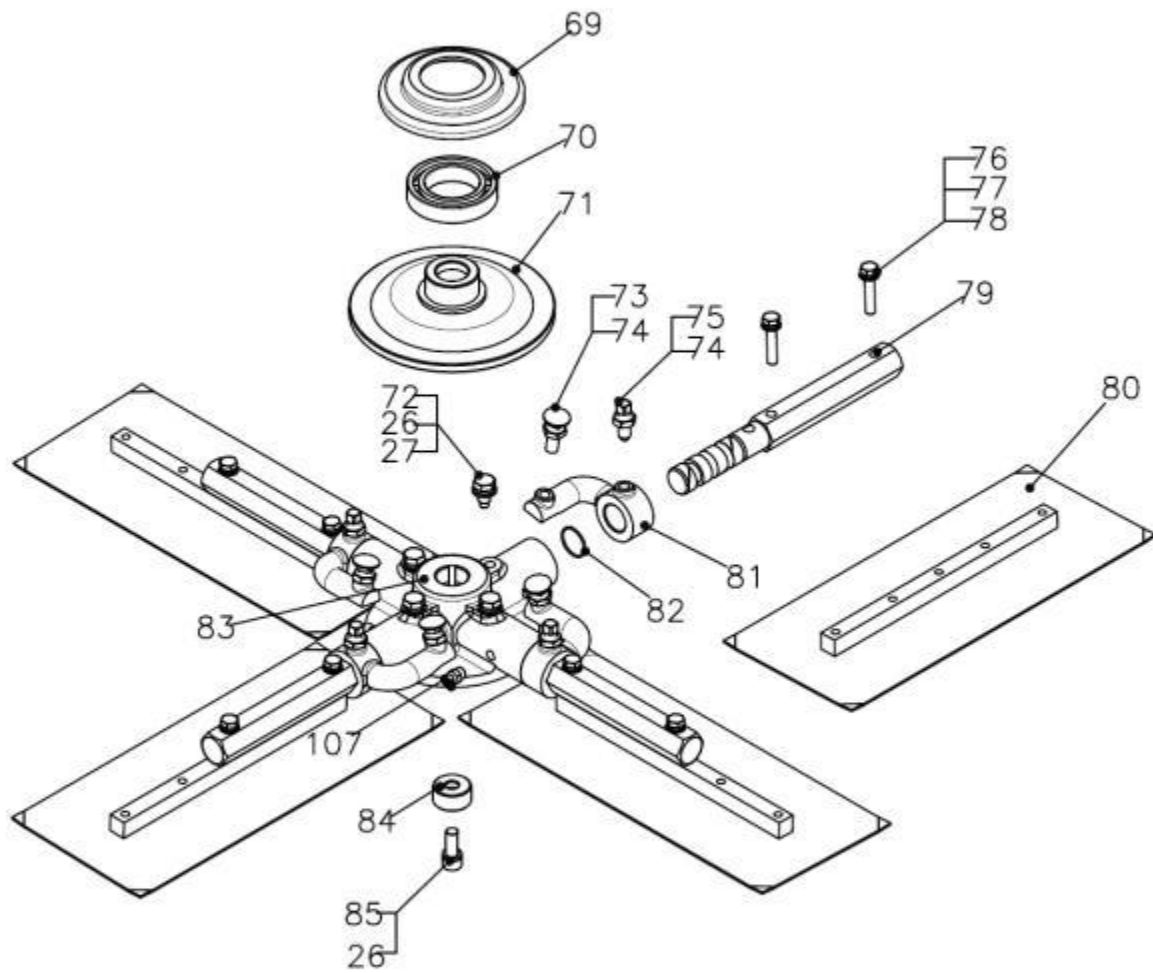
Parts Diagram

Handle



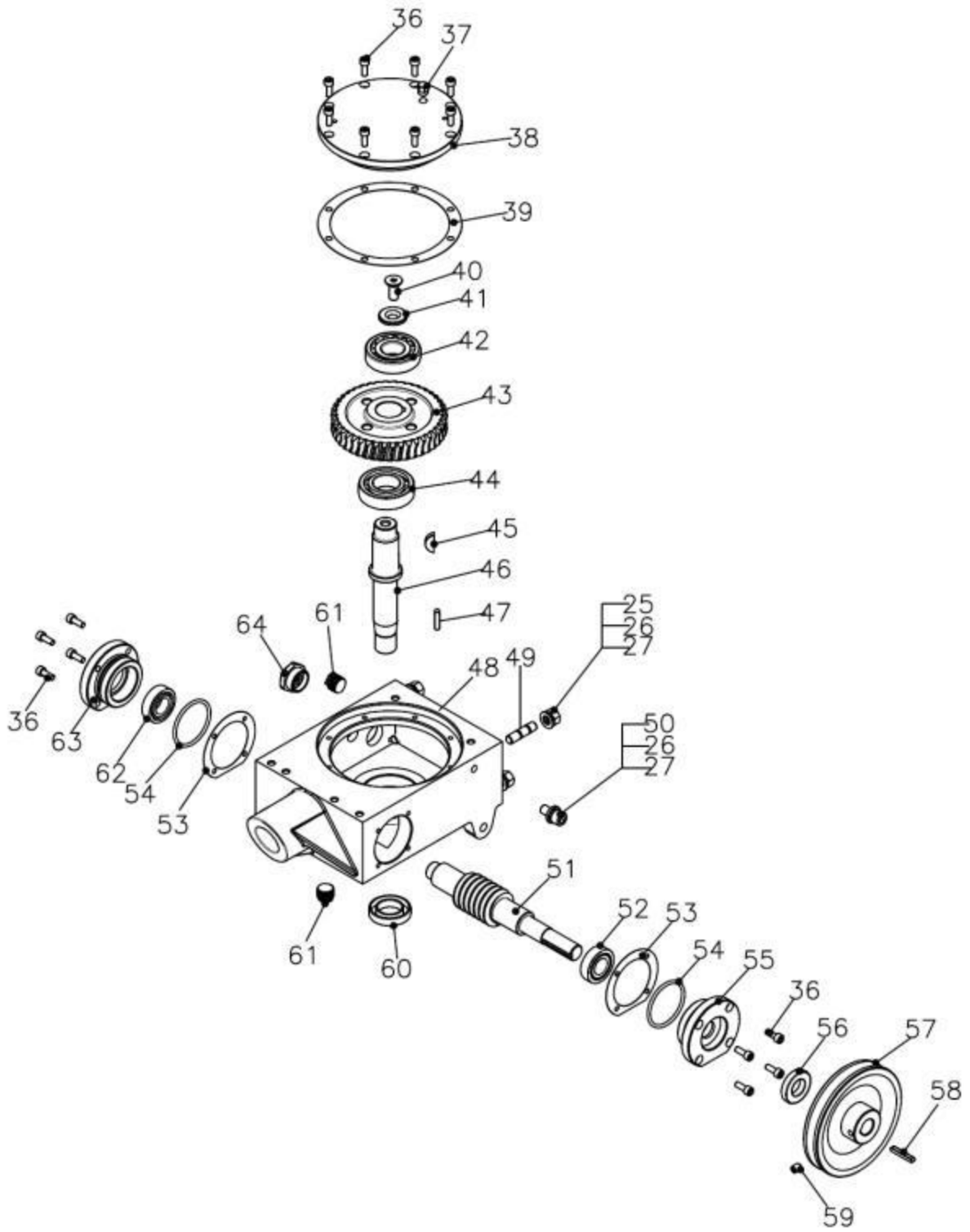
| REF | Parts No. | Description | Q'TY | Dimension |
|-----|----------------|-------------------------------|------|-----------|
| 1 | RG-003 | Plastic Cover | 2 | |
| 2 | QSC-M4*8 | Screw | 2 | M4x8 |
| 3 | QWS-PM4 | Plate Washer | 2 | M4 |
| 4 | TSA-01 | Throttle Assy. | 1 | |
| 5 | QNT-NM4 | Nylock Nut | 2 | M4 |
| 6 | W436F-001 | Handle WA | 1 | |
| 7 | PAS-02 | Stop Switch(release bar Type) | 1 | |
| 8 | 436F-01-001 | Adjust Knob | 1 | |
| 9 | QSP-5X50 | Spring Pin | 1 | 5x50 |
| 10 | QBR-51104 | Bearing | 1 | |
| 11 | QBL-M6X10 | Bolt | 1 | M6x10 |
| 12 | 436F-01-004 | Aluminium Guide | 1 | |
| 13 | QWS-WM19 | Wave Washer | 1 | M19 |
| 14 | QWS-PM19 | Plate Washer | 1 | M19 |
| 15 | QSR-S18 | Snap Ring | 1 | S18 |
| 16 | 436F-01-002 | Adjust Screw Pipe | 1 | |
| 17 | QBL-M6X8 | Bolt | 1 | M6x8 |
| 18 | QWS-PM6 | Spring Washer | 1 | M6 |
| 19 | 436F-01-003 | Screw Guide | 1 | |
| 20 | QSP-5X30 | Spring Pin | 1 | 5x30 |
| 21 | 436F-01-007 WT | Steel Wire | 1 | |
| 22 | 436F-02-004 | Yoke Arm Pin | 1 | |
| 23 | QSR-S10 | Snap Ring | 2 | S10 |
| 24 | 436F-02-003B | Yoke Arm | 1 | |
| 25 | QNT-NM10 | Nylock Nut | 10 | M10 |
| 26 | QWS-SM10 | Spring Washer | 14 | M10 |
| 27 | QWS-PM10 | Plate Washer | 18 | M10 |
| 28 | 436F-02-001 | Handle Support Base | 1 | |
| 29 | QBL-M10X70 | Bolt | 1 | M10x70 |
| 30 | QBL-M10X35 | Bolt | 4 | M10x35 |
| 31 | 436F-02-002 | Upper Bracket | 1 | |
| 32 | 436F-01-005 | Alumium yoke | 1 | |
| 33 | 436A-01-010 | Wheel | 1 | |
| 34 | QSP-3X30 | Spring Pin | 1 | 3x30 |

Blade



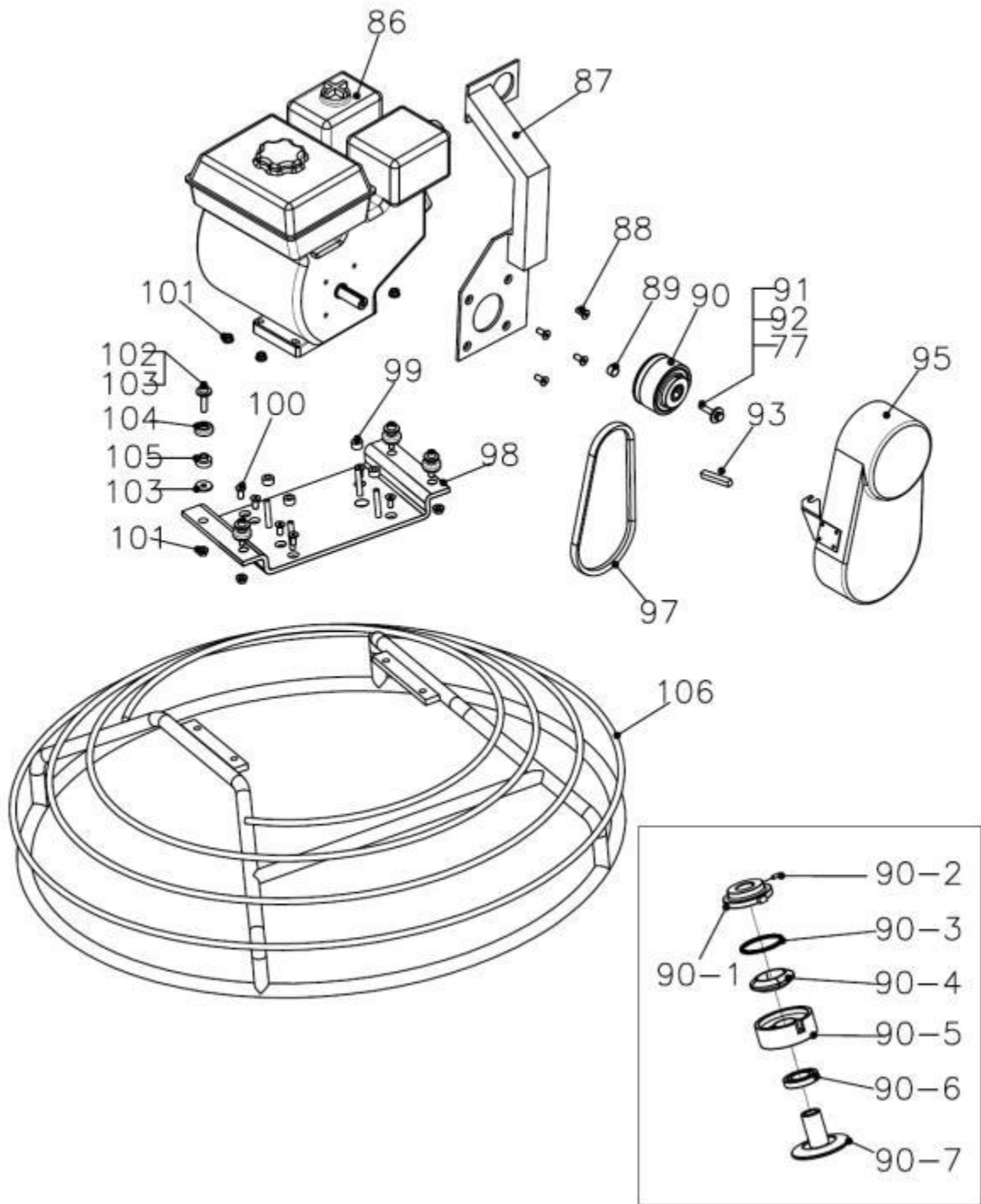
| REF | Parts No. | Description | Q'TY | Dimension |
|-----|---------------|------------------|------|-----------|
| 26 | QWS-SM10 | Spring Washer | 5 | M10 |
| 27 | QWS-PM10 | Plate Washer | 4 | M10 |
| 69 | 436F-02-005B | Press Plate Cap | 1 | |
| 70 | QBR-6009 | Bearing | 1 | 6009 |
| 71 | 436F-02-006B | Press Plate Cap | 1 | |
| 72 | QBL-M10X20 | Bolt | 4 | M10x20 |
| 73 | QBL-BBM10X35 | Round Head Bolt | 4 | M10x35 |
| 74 | QNT-TM10 | Thin Nut | 8 | M10 |
| 75 | QBL-SHM10X30 | Square Head Bolt | 4 | |
| 76 | QBL-7/16X11/2 | Bolt | 8 | 7/16*3/2L |
| 77 | QWS-SM8 | Spring Washer | 8 | M8 |
| 78 | QWS-PM8 | Plate Washer | 8 | M8 |
| 79 | 436F-02-009B | Blade Arm | 4 | |
| 80 | 436F-02-014 | Blade Assembly | 4 | |
| 81 | 436F-02-008 | Tilt Arm | 4 | |
| 82 | QOR-S22 | O-ring | 4 | 22x1.5t |
| 83 | 436F-02-007B | Spider | 1 | |
| 84 | 436F-02-010 | Spider Bushing | 1 | |
| 85 | QBL-LM10X30 | Socket Bolt | 1 | M10x30 |

Gear Box



| REF | Parts No. | Description | Q'TY | Dimension |
|-----|---------------|-----------------------|------|-----------|
| | 436F-03 | Gear Box Assembly | 1 | |
| 25 | QNT-NM10 | Nylock Nut | 4 | M10 |
| 26 | QWS-SM10 | Spring Washer | 5 | M10 |
| 27 | QWS-PM10 | Plate Washer | 5 | M10 |
| 36 | QBL-M6X16 | Bolt | 16 | M6x16L |
| 37 | QRV-M8 | Release Valve | 1 | |
| 38 | 436F-03-004 | Big Cover | 1 | |
| 39 | 436F-03-005 | Gasket of Big Cover | 1 | |
| 40 | QBL-FHM10x25 | Flat Socket Head Bolt | 1 | M10x25 |
| 41 | QWS-SSM10 | Washer | 1 | M10 |
| 42 | QBR-30305 | Bearing | 1 | 30305 |
| 43 | 436F-03-008 | Worm Gear | 1 | |
| 44 | QBR-6206 | Bearing | 1 | 6206 |
| 45 | QKY-W6X10X25 | Wood Key | 1 | 6x10x25 |
| 46 | 436F-02-012 | Main Shaft | 1 | |
| 47 | QKY-6X25 | Key | 1 | 6x25 |
| 48 | 436F-03-001 | Shell | 1 | |
| 49 | QBL-STM10x40 | Stud Bolt | 4 | M10x40 |
| 50 | QBL-M10X16 | Bolt | 1 | M10x16 |
| 51 | 436F-03-007 | Worm Shaft | 1 | |
| 52 | QBR-32004 | Bearing | 1 | 32004 |
| 53 | 436F-03-006 | Gasket of Side Cover | 2 | |
| 54 | QOR-P55 | O-Ring | 2 | 55x3.5t |
| 55 | 436F-03-003 | Output Side Cover | 1 | |
| 56 | QOS-20X40X8 | Oil Seal | 1 | 20x40x8t |
| 57 | 436F-04-005 | Pulley | 1 | |
| 58 | QKY-5X35 | Key | 1 | 5x35 |
| 59 | QBL-M8X10 | Bolt | 1 | M8x10 |
| 60 | QOS-27X47X10 | Oil Seal | 1 | 27x47x10t |
| 61 | 436A-03-008WT | Oil Drain | 2 | |
| 62 | QBR-6004 | Bearing | 1 | 6004 |
| 63 | 436F-03-002 | Side Cover | 1 | |
| 64 | QOCW-M27x1.5 | Oil Check Windows | 1 | M27x1.5 |

Safety Ring



| REF | Parts No. | Description | Q'TY | Dimension |
|------|-------------|----------------------|------|-----------|
| 77 | QWS-SM8 | Spring Washer | | M8 |
| 86 | GX160 | Engine GX-160 | 1 | |
| 87 | W436F-005 | Hook Lift | 1 | (Option) |
| 88 | QBL-SHM8X20 | Socket Head Cap Bolt | 4 | (Option) |
| 89 | 436F-04-013 | Clutch Busing | 1 | |
| 90 | CA-01 | Clutch | 1 | |
| 90-1 | CA-01-004 | Face Plate | 1 | |
| 90-2 | QBL-AM8x16 | Set Screw | 2 | M8x16 |
| 90-3 | CA-01-005 | Clutch Spring | 1 | |
| 90-4 | CA-01-003 | Shoe Weight | 1 | |
| 90-5 | CA-01-002 | Clutch Drum | 1 | |
| 90-6 | QBR-6006 | Bearing | 1 | 6006 |
| 90-7 | CA-01-001 | Clutch Shaft | 1 | |
| 91 | QBL-M8X35 | Bolt | 1 | |
| 92 | QWS-SPM8 | Special Plate Washer | 1 | |
| 93 | QKY-5x5x50 | Key | 1 | |
| 95 | 436F-04-006 | Belt Cover | 1 | |
| 97 | QBT-A26 | V-Belt | 1 | A26 |
| 98 | W436F-002 | Engine Mount Plate | | |
| 99 | 436F-04-107 | Engine Mount Bushing | | |
| 100 | QBL-FHM8X20 | Flat Head Cap Bolt | 4 | |
| 101 | QNT-M8 | Nut | 8 | M8 |
| 102 | QBL-LM8X40 | Socket Head Bolt | 4 | M8X40 |
| 103 | QWS-PM8 | Plate Washer | 8 | M8 |
| 104 | 436F-04-004 | Cup | 4 | |
| 105 | 436F-04-003 | Rubber | 4 | |
| 106 | W436F-004B | Safety Ring | 1 | |

TOMAHAWK

PRODUCT CATALOG

COMPACTION



HONDA
ENGINES

3,550 lbs/ft Vibratory Rammer
Part#: TR68H

3.6 HP Honda GXR120 Engine
Easily achieve a 100% compaction rating
3-in-One Fuel System with carburetor protection
13" x 11" plate for narrow trenches and corners
3 Year Engine Warranty & 1 Year Product Warranty



HONDA
ENGINES

3,400 lbs/ft Plate Compactor
Part#: TPC90H

5.5 HP Honda GX160 Engine
Easily achieve a 100% compaction rating
22" x 20" cold, rolled steel beveled base plate
Includes 3.5 gallon water tank for asphalt compaction
3 Year Engine Warranty & 1 Year Product Warranty



HONDA
ENGINES

KOHLER
ENGINES

3,000 lbs/ft Plate Compactor
Part#: TPC80 & TPC80H

6 HP Kohler CH260 & 5.5 HP Honda GX160 Engines
Easily achieve a 100% compaction rating
16.5" x 21.5" plate for narrow trenches and corners
Optional Honda Engine model: TPC80H
3 Year Engine Warranty & 1 Year Product Warranty

FINISHING



6.5 Gal Backpack Concrete Sprayer
Part#: TCS6.5

Maintain constant, adjustable pressure up to 450 PSI
Achieve superior concrete finishes with even spraying
Spray 15,000 sq ft in less than 10 minutes
Compatible with major manufacturer wands
1 Year Product Warranty



HONDA
ENGINES

1.6 HP Vibratory Concrete Screed
Part#: TVSA-H

1.6 HP Honda GX35 Engine
Aluminum Magnesium blades available from 8ft - 14ft
Finish concrete 4X faster than other screed methods
360° adjustable handle placement
3 Year Engine Warranty & 1 Year Product Warranty



HONDA
ENGINES

6" Early Entry Green Concrete Saw
Part#: TFS6H

5.5 HP Honda GX160 Engine
Maximum cutting depth of 1 3/16 inches
OSHA compliant vacuum port for dust collection
Includes 6" early entry concrete blade
3 Year Engine Warranty & 1 Year Product Warranty

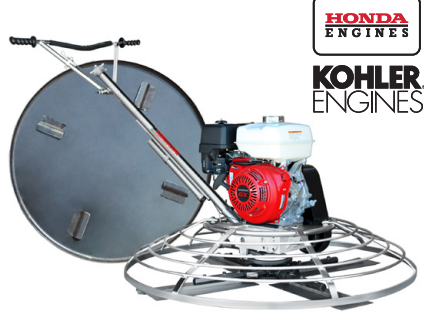
FINISHING



HONDA
ENGINES

1.6HP Backpack Concrete Vibrator
Part#: TVIBH + TVW10-P

1.6 HP Honda GX35 engine
Consolidation with speeds of 10,000-12,000 VPM
Quick Connect centrifugal clutch vibrator
1" and 2" Diameter Whips Available in 10ft Length
3 Year Engine Warranty & 1 Year Product Warranty



HONDA
ENGINES

KOHLER
ENGINES

36" & 46" Concrete Power Trowel
Part#: TPT36H/K & TPT46H/K

6 HP/14HP Kohler & 5.5HP/8.5HP Honda Engines
Adjust trowel blade pitch from 0-28°
60-115 RPM rotor speed for superior concrete finishes
Includes float pan and trowel blades
3 Year Engine Warranty & 1 Year Product Warranty



HONDA
ENGINES

8" Gas Powered Concrete Scarifier
Part#: TSCAR8H

5.5 HP Honda GX160 Engine
Remove traffic lines at 800 - 1,000 linear ft/hr
Tungsten Carbide Blade Kit Available
OSHA approved dust port for silica vacuum removal
3 Year Engine Warranty & 1 Year Product Warranty

HAVE QUESTIONS?

Contact us. *We're here to help!*

Email us at sales@tomahawk-power.com



POWER YOUR WORLD

Tomahawk understands to keep a job-site running smoothly the proper equipment and spare parts are needed at the drop of a hat. With same day shipping and faster delivery times, count on Tomahawk to keep you powered throughout the day! With long lasting parts and engines, Tomahawk equipment will be the star of your fleet for years to come. Visit www.tomahawk-power.com to get started today!

Tomahawk Power, LLC
San Diego, CA

Sales Support
(866) 577-4476
sales@tomahawk-power.com

Equipment Support
(866) 577-4476
support@tomahawk-power.com

www.tomahawk-power.com



FACEBOOK
facebook.com/TomahawkPowerUSA

YOUTUBE
youtube.com/TomahawkPower

INSTAGRAM
[@tomahawkpower](https://instagram.com/tomahawkpower)